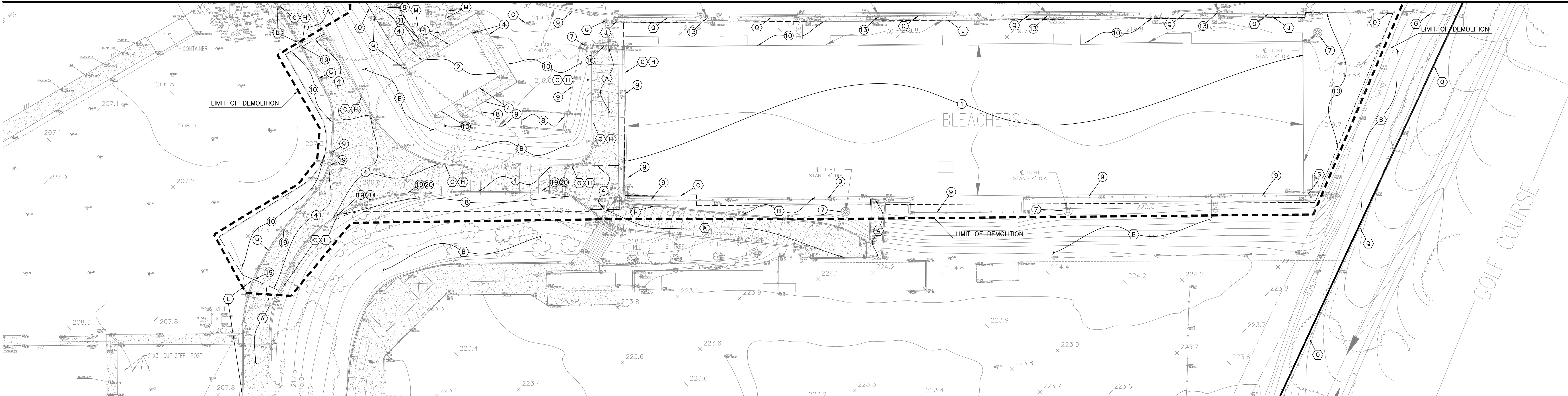
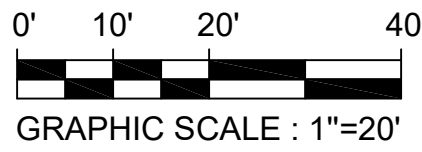


JOIN LINE - SEE SHEET C3.01



DEMOLITION PLAN



DEMOLITION NOTES:

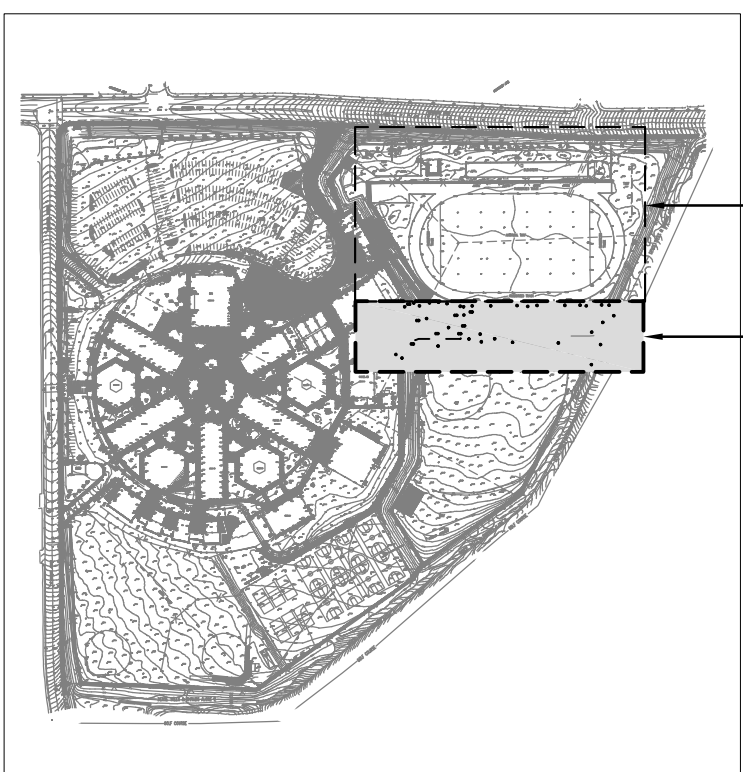
- 1 REMOVE EXISTING BLEACHERS AND UNDERLYING PAVEMENT (IF ANY) PER ARCHITECTURAL PLANS.
- 2 REMOVE EXISTING FIELDHOUSE PER ARCHITECTURAL PLANS.
- 3 REMOVE EXISTING TRACK AND FIELD.
- 4 REMOVE EXISTING CONCRETE PAVEMENT.
- 5 REMOVE EXISTING TICKET BOOTH PER ARCHITECTURAL PLANS.
- 6 REMOVE EXISTING LINEAR DRAIN AND CONCRETE V-GUTTER.
- 7 REMOVE EXISTING FIELD LIGHTING AND FOOTING.
- 8 STORAGE CONTAINER TO BE RELOCATED. CONTRACTOR TO COORDINATE THE NEW LOCATION WITH THE DISTRICT. CONTRACTOR TO RELOCATE STORAGE CONTAINER AND ALL OF ITS CONTENTS TO INTERIM LOCATION WITHIN CAMPUS SITE DURING CONSTRUCTION. CONTRACTOR IS TO RELOCATE THE CONTAINERS BACK TO THE PROJECT SITE AT THE END OF CONSTRUCTION. CONTRACTOR IS TO COORDINATE THE INTERIM AND NEW LOCATIONS OF THE STORAGE WITH THE DISTRICT.
- 9 REMOVE EXISTING CHAIN LINK FENCE, POST, FOOTING AND ALL ITS APPURTENANCES IN ITS ENTIRETY.
- 10 REMOVE EXISTING ASPHALT PAVEMENT.
- 11 ADJUST UTILITY BOXES, METERS, VALVES, OR CATCH BASINS TO GRADE.
- 12 REMOVE EXISTING FIELD SCOREBOARD.
- 13 REMOVE EXISTING SPEAKER POST AND BASE.
- 14 REMOVE EXISTING SAND PIT AND CURB.
- 15 REMOVE EXISTING HANDRAILS.
- 16 REMOVE EXISTING GATE.
- 17 REMOVE EXISTING MICROWAVE DISH ATTACHED TO THE LIGHT POLE.
- 18 REMOVE EXISTING LANDSCAPING. SEE IRRIGATION PLANS FOR EXISTING IRRIGATION SALVAGE/DISPOSAL.
- 19 REMOVE EXISTING CURB.
- 20 REMOVE EXISTING WALL AND FOOTINGS.
- 21 REMOVE EXISTING CATCH BASIN. SEE SHEET C3.04 FOR PIPE REMOVAL.

SALVAGE NOTES:

- A PROTECT IN PLACE EXISTING CONCRETE PAVEMENT.
- B PROTECT IN PLACE EXISTING LANDSCAPE AREA.
- C PROTECT EXISTING RETAINING WALL AND FENCE ON TOP (WHERE OCCURS).
- D PROTECT EXISTING V-GUTTER.
- E PROTECT IN PLACE EXISTING ASPHALT PAVEMENT.
- F PROTECT IN PLACE EXISTING STRUCTURE.
- G PROTECT IN PLACE EXISTING CATCH BASIN.
- H PROTECT IN PLACE EXISTING CONCRETE CURB.
- I PROTECT IN PLACE EXISTING LIGHT POST.
- J PROTECT IN PLACE EXISTING LINEAR DRAIN AND CONCRETE V-GUTTER.
- K PROTECT IN PLACE EXISTING STORAGE CONTAINER.
- L PROTECT IN PLACE EXISTING CHAIN LINK FENCE.
- M PROTECT IN PLACE EXISTING UTILITY BOX.
- N PROTECT IN PLACE EXISTING SPEAKER POST.
- O PROTECT IN PLACE EXISTING FLAG POLE.
- P PROTECT IN PLACE EXISTING STEEPLE JUMP.
- Q PROTECT EXISTING CHAIN LINK FENCE POSTS. REPLACE FABRIC PER SHEET TF1.11.
- R PROTECT IN PLACE EXISTING DOMESTIC WATER SHUT-OFF VALVE.
- S PROTECT IN PLACE EXISTING FENCE GATE.

LEGEND

--- LIMIT OF DEMOLITION

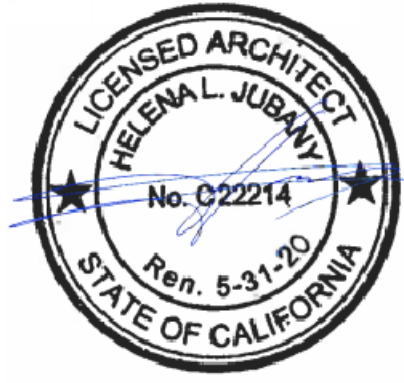


KEY MAP  
GRAPHIC SCALE : 1"=500'

IDENTIFICATION STAMP  
DIV. OF THE STATE ARCHITECT  
APP: 03-120551 INC:  
REVIEWED FOR  
SS ☒ FLS ☒ ACS ☒  
DATE: 01/11/2021

REVISIONS

BRANDOW & JOHNSTON  
STRUCTURAL-CIVIL ENGINEERS (BAJ) INC.  
700 S FLOWER ST #1800 LOS ANGELES CA 90017  
TEL: 213.594-4500 FAX: 213.594-4501  
BAJ PROJECT # C19008



NORWALK LA MIRADA UNIFIED SCHOOL DISTRICT  
LA MIRADA HIGH SCHOOL NEW FOOTBALL  
STADIUM PROJECT  
13520 ADELEA DRIVE, LA MIRADA, CA 90338

DSA # 03-120551

NAC  
ARCHITECTURE

NAC NO. 161-19015  
DATE 12/10/2020

DSA SUBMISSION

DEMOLITION  
PLAN

C3.02

© 2015 NAC INC.

H:\C19-0037 - NAC - NMUSD - La Mirada HS\Engineering\Drawings\C3.02.dwg Plotted On: Aug 20, 2020 - 10:58am By: bnguyen